

SS Checker

Suspended Solids-monitoring Revolution

Easy-to-use compact model has been achieved with well-developed functions.



SS Checker:
TCS-1000

Transmitter:
SC-T4

Built-in wiping cleaning system certainly keeps lenses clean.

Check and clean the window surface once every month.

“Easy to clean” scratch-proof sapphire glass for the optical windows.

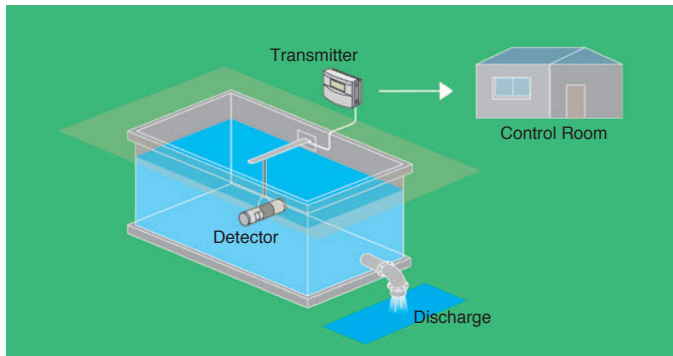
The optical windows are made of hard-to-scratch sapphire glass. It enables you to scrub the window surface without problems.

Compact size can fit into any installation site.

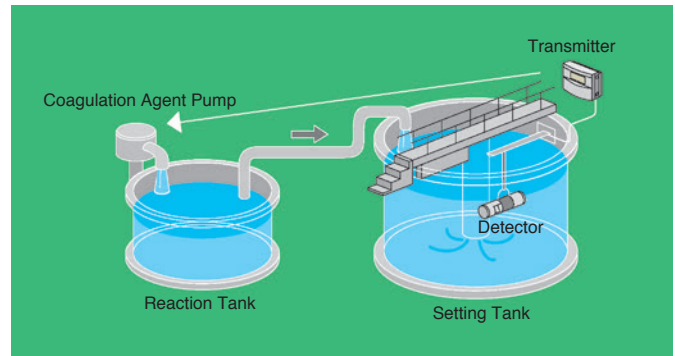
The compact design makes it possible to install any places.

Application

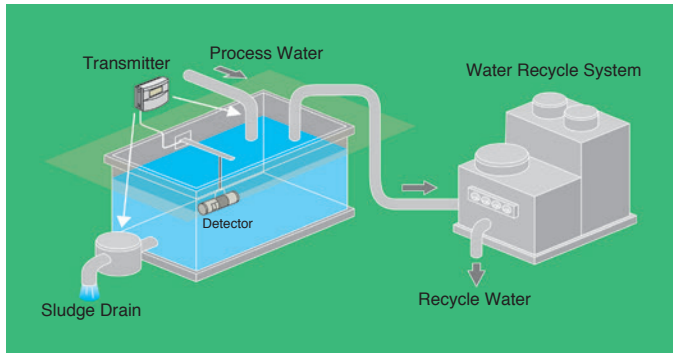
Monitoring the final discharged water.



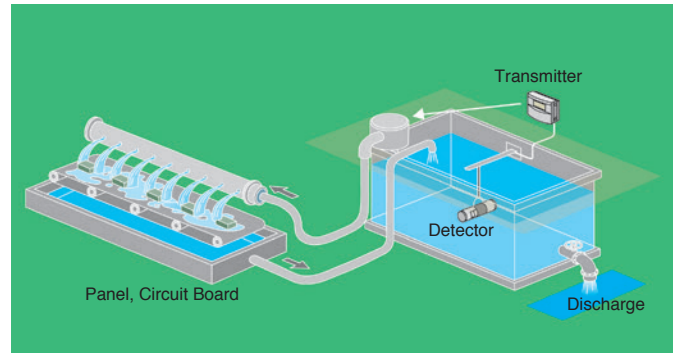
Controlling the coagulation agent.



Controlling the water recycle system.

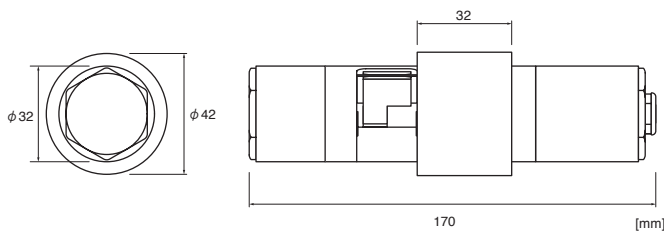


Controlling the rinse water.

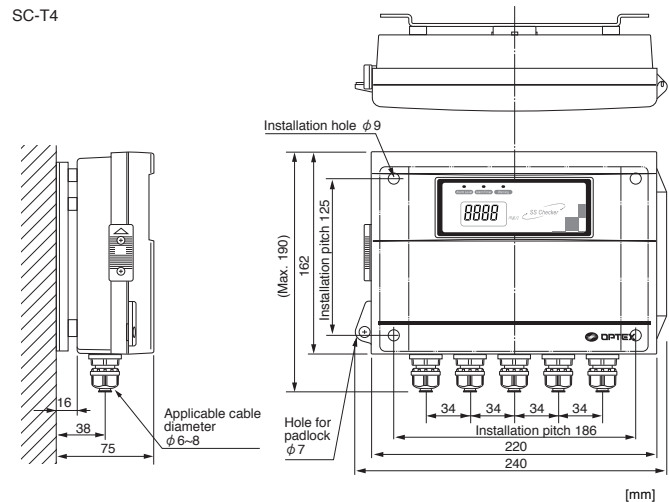


Dimensions

TCS-1000



SC-T4



Specifications

| Model No. | TCS-1000 |
|----------------------------|--|
| Measuring range | 0-1000 (mg/L) |
| Power supply | 12 VDC $\pm 10\%$ |
| Current draw | At regular operation: 30 mA (Max.), At cleaning operation: 240 mA (Max.) (excluding analog signal output) |
| Output | Analog (4-20 mA) Signal Output: resistance load of 300 Ω (Max.) 4 mA: 0 (mg/L) 20 mA: 1000 (mg/L) Self Checking Output: open collector (12 VDC 20 mA Max.) |
| Input | Calibration Signal Input |
| Cleaning system | Both sided swing wiper cleaning system |
| Time interval for cleaning | Clean once immediately after power-on, and subsequently clean once every 10 minutes. |
| Operating Temperature | 0 to +40°C (unfrozen) |
| Major Material | SUS 316L, sapphire glass, fluorocarbon rubber, EPDM, POM |
| Dimensions | $\phi 32 \times 170$ mm (excluding Horizontal Hanging Attachment) |
| Weight | approx. 930 g |
| Degree of Protection | IP68, maximum depth of 2 meters (underwater type) |
| Detector cable length | 10 m |
| Option | Transmitter (SC-T4), Mounting Attachment (TA-1), Maintenance kit (TC-MK) |

| Model No. | SC-T4 |
|-----------------------|---|
| Power supply | 100-240 VAC $\pm 10\%$ 50/60 Hz |
| Power consumption | Normal: 8 VA or less, during washing: 16 VA or less (including detector, at the time of analog signal input/output of 20 mA) |
| Display resolution | 0.1 mg/L (0-49.9 mg/L), 1 mg/L (50-1000 mg/L) |
| Output | Calibration Output Power Supply for Sensor (12 VDC) Signal Output (analog 4-20 mA, resistance load of 300 Ω or less) Self-checking Relay Output (non-voltage C-contact capacity 240 VAC, 1A resistance load) Alarm Relay Output (non-voltage C-contact capacity 240 VAC, 1A resistance load) |
| Input (detector) | Detector signal input (analog 4-20 mA, input resistance approx. 100 Ω) Self-checking input |
| Operating temperature | -20 to +50 °C, humidity 95%RH or less (Avoid direct sunlight) |
| Main material | Polycarbonate |
| Dimensions | Approx. 162 (H) x 240 (W) x 75 (D) mm |
| Weight | Approx. 1.6 kg (including Mounting Brackets) |
| Degree of protection | IP65 (jetproof type) |

Note: Specifications and design are subject to change without prior notice.

OPTEX CO., LTD.

5-8-12 Ogoto Otsu Shiga 520-0101 Japan
Tel. +81-77-579-8680 Fax. +81-77-579-8199
www.optex.co.jp/e/