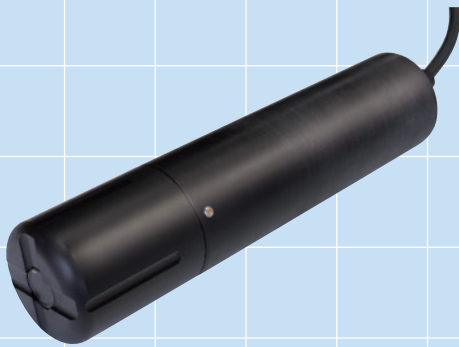


OPTeX Optical Dissolved Oxygen Sensor -Easy Installation, Simple Operation-



Optical Dissolved Oxygen Sensor

Detector: DOS-20

- Combination use with MLSS Analyzer for biological treatment or MBR process
- Robust Design -Inert ABS construction
- Long Term Stability -No Influence by water flow rate

Trasmitter

SC-DO

- Robust Design
- IP65 Water Jet Proof
- Simple Key Operation



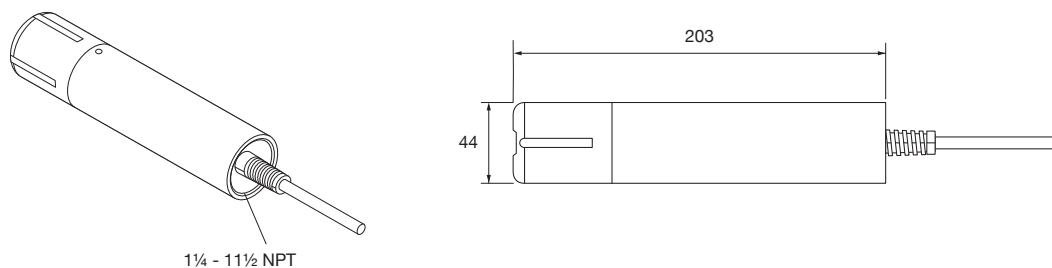
Optical Dissolved Oxygen Sensor

Specifications

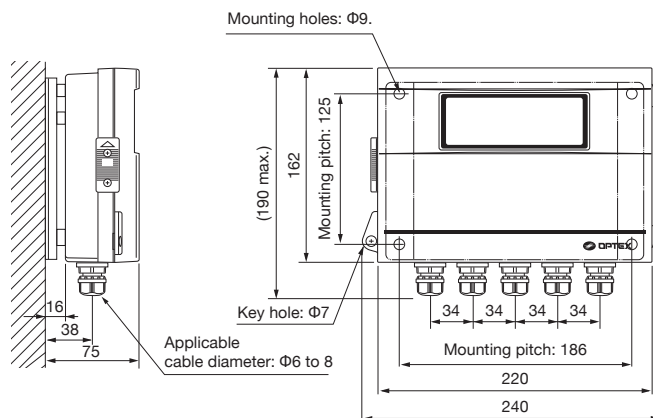
Model		Detector DOS-20/Transmitter SC-DO			
Measuring Parameter	Dissolved Oxygen (mg/L) Temperature (°C) Dissolved Oxygen Saturation Rate (%) Oxygen Partial Pressure (kPa)				
Measuring Range/ Display Resolution	[Dissolved Oxygen] 0.00–20.00 mg/L (0.01 mg/L)		[Dissolved Oxygen Saturation Rate] 0.0–200.0% (0.1%)		
	[Temperature] 0.0–50.0°C (0.1°C)		[Oxygen Partial Pressure] 0.0–150.0 kPa (0.1 KPa)		
Measurement Accuracy	±0.1 mg/L (0–8 mg/L) , ±0.2 mg/L (8–20 mg/L)				
Response Time	90% <45 seconds, 95% <60 seconds (Water temperature : 25°C)				
Sensor Cap Replacement Term	About 1 Year				
Power Supply	100–240 VAC 15 VA max.				
Signal Output	4–20 mA (load resistance 500 Ω max.) x 2				
Relay Output	non-voltage C-contact capacity 240 VAC, 2 A resistance load				
Cleaning Output	Connect to a cleaning device (non-voltage A-contact capacity 240 VAC, 2 A resistance load)				
Calibration	1-Point, 2-Point, Concentration Option, Initialized Calibration				
Correction	[Salinity Concentration Correction] 0–42 PSU [Altitude Correction] 0–5000 m				
Measuring water temperature	0 to 50°C				
Ambient Temperature	Transmitter : -20 to 50°C Humidity 95%RH or less (Avoid direct sunlight)				
Material	Detector	ABS			
	Transmitter	Polycarbonate			
Dimensions	Detector	Φ44 x 203 mm			
	Transmitter	162 (H) x 240 (W)x75 (D) mm			
Weight	Detector	850 g (including 10 m cable)			
	Transmitter	Approx. 1.6 kg (including the Mounting Bracket)			
Degree of protection	Detector	Underwater type, maximum depth of 200 m (IP68)			
	Transmitter	Jetproof type (IP65)			
Cable Length	10 m				
Option	Mounting Attachment (DA-1), Replacement Sensor Cap (DOS-CP)				

Dimensions (unit: mm)

Detector DOS-20



Transmitter(Outdoor Type) SC-DO



OPTEX CO., LTD.

5-8-12 Ogoto Otsu Shiga 520-0101 Japan
Tel. +81-77-579-8680 Fax. +81-77-579-8199
www.optex.co.jp/e/