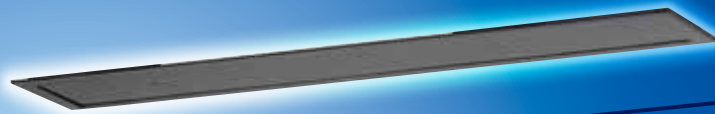


Active Infrared Door Sensor



MIRAGE



Recess Mount

Optex Mirage is designed to be installed in the header of the door operator or as a built in ceiling mount sensor.

It offers you both safety and activation on all types of automatic doors.

It combines easy adjustable settings, providing maximum safety in a wide array of applications.

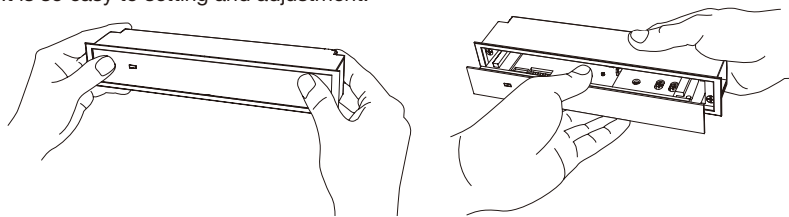


Elegant solution for design conscious applications The Optex Mirage is designed for installation in the header of the door operator.

Due to its recessed mounted design and the 2 rows of presence detection, this sensor is an elegant and safe solution for applications where design of appearance is very much emphasized.

One Push Opening Body Structure

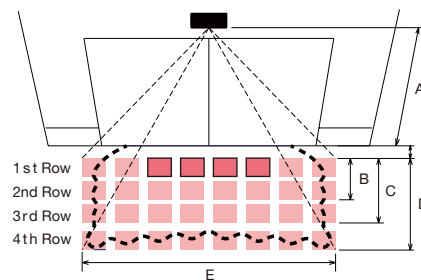
By pressing the detection window, The main body appears. It is so easy to setting and adjustment.



Specifications

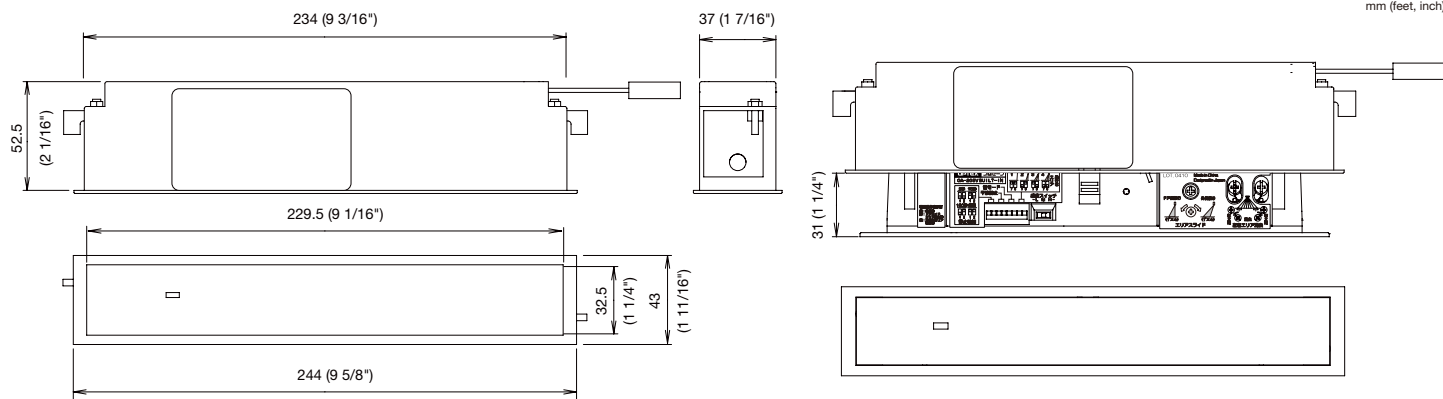
| | |
|----------------------------|---|
| Model | MIRAGE |
| Mounting height | 3.0 m (9' 10") max. |
| Detection area | See detection area |
| Detection method | Active infrared reflection method |
| Detection angle adjustment | ±4°adjustable by steps of 1 degree (deep/shallow) |
| Power supply | 12 to 30 V AC/DC |
| Current draw | 200 mA max. (at 12 V DC) |
| Operating indicator | Green : Standby Red: 1st Row detection active Orange: Other rows detection active |
| Output contact | Form C relay 50 V, 0.3 A max. |
| Relay hold time | 0.5s |
| Operating temperature | -20 to +55° C (-4 to +131°F) |
| Outer dimensions | 244 x 52.5 x 43 mm (w x h x d) |
| Weight | 260 g (9.2 oz) |
| Accessories | Accessories 3m Connection cable, area adjust ment tool |

Detection Area



| | Unit: m (feet) | | | | |
|---|--------------------|-------------------|-------------------|--------------------|--------------------|
| A | 2.00 (6' 6 3/4") | 2.20 (7' 2 5/8") | 2.50 (8' 2 7/16") | 2.70 (8' 10 5/16") | 3.00 (9' 10 1/8") |
| B | 0.42 (1' 4 11/16") | 0.47 (1' 6 3/8") | 0.53 (1' 8 7/8") | 0.57 (1' 10 1/2") | 0.64 (2' 1") |
| C | 0.85 (2' 9 5/8") | 0.94 (3' 15/16") | 1.07 (3' 6") | 1.15 (3' 9 3/8") | 1.28 (4' 2 3/8") |
| D | 1.50 (4' 11 1/8") | 1.65 (5' 5 1/16") | 1.88 (6' 1 7/8") | 2.03 (6' 7 13/16") | 2.25 (7' 4 11/16") |
| E | 2.07 (6' 9 5/8") | 2.28 (7' 5 3/4") | 2.59 (8' 6") | 2.80 (9' 2 3/16") | 3.11 (10' 2 3/8") |
| F | 0.21 (8 1/8") | 0.23 (8 15/16") | 0.26 (10 3/16") | 0.28 (11") | 0.31 (1' 3/16) |

Dimensions



Manufacturer / Asia sales Div.

OPTEX CO.,LTD.

5-8-12 Ogoto Otsu Shiga 520-0101 Japan
TEL.: +81-77-579-8360 FAX.: +81-77-579-8190

Asia Sales Div.

TEL.: +81-77-579-8030 FAX.: +81-77-579-8136
WEBSITE: www.optex.co.jp/as/eng/index.html

North and South American Subsidiary

OPTEX INCORPORATED. AMERICAS HEADQUARTERS

18730 South Wilmington Ave. Suite 100 Rancho Dominguez, CA 90220 U.S.A.
TOLL-FREE: 800 877 6656 FAX.: +1 310 214 8656
WEBSITE: www.ot-inc.com

East Coast Office

8510 McAlpines Park Drive, Suite 108 Charlotte, NC 28211 U.S.A.
TOLL-FREE: 800 877 6656 FAX.: +1 704 365 0818
WEBSITE: www.ot-inc.com

European Subsidiary

OPTEX Technologies B.V.

Henricuskade 17, 2497 NB The Hague, The Netherlands
TEL.: +31(0)70 419 41 00 FAX.: +31(0)70 317 73 21 E-MAIL: info@optex.eu
WEBSITE: www.optex.eu