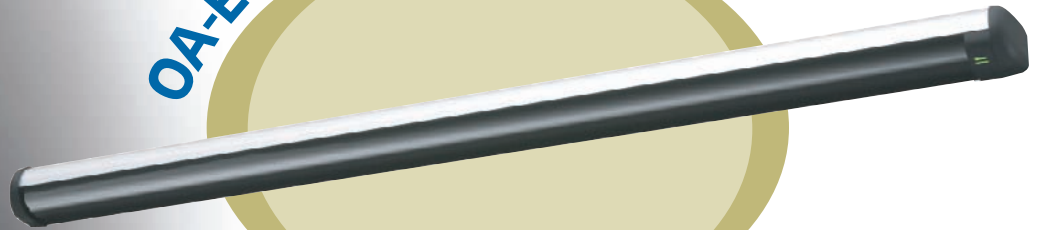




*Swing door*  
**Safety sensor**

**OA-Edge series**



**Safety** *Reliable* *Design* **Triangulation**  
*Active infrared*  
**Plug and play modular flexible** **UNIVERSAL**  
*Easy installation* **QUALITY**

The Optex OA-Edge series are developed to increase the safety level on automatic swing door. The OA-Edge series are based on the Optex Active infrared triangulations technology. Due to the modular design you can upgrade the safety level of the sensor by adding additional modules. The OA-Edge T is in compliance with the latest European and local regulations as DIN 18650 and tested and approved by the German test organization TÜV.



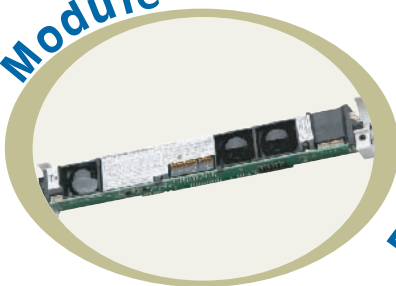
## Easy installation

The sensor is easy to install by simply clicking the master and slave modules into the profile, the master and slave modules are connected by a communication cable with connector. Alternative power supply connector on the master module makes installation more flexible and quicker.

## Design

The Optex OA-Edge series has a very slim design in order to fit on many different types of swing doors. The sensor is available in a silver or black profile completed with a black lens.

Module



Power



## Safety

The wide detection area of each module secures a high level of safety around the door and will prevent the door leaf from hitting an object or person near the door. The Optex OA-Edge T is tested and approved by the German test organization TÜV and in compliance with the German DIN 18650.

## Module

The sensor can be assembled using master and slave modules according to the required safety level and the width of the swing door. For a standard configuration of 2 sensors installed on door with a width of 900 cm only one master module is required, a maximum of 3 slave modules can be connected to this master module.

## Quick adjustment

Adjustments to the sensor are done by the use of dipswitches and a levelling screw. When the sensor is set up an easy push on the function switch will start the initialization and learning cycle. After installation, sensor status can be easily checked by the visible LED.

## Specifications OA-Edge

Model	OA-Edge
Profile colour	Silver / black
Mounting height	1.5 (4'11") to 3.0 m (9'10")
Detection method	Triangulation
Min. configuration	1 master module + 1 LED module
Max. configuration	4 sensor modules + 2 LED modules
Depth angle adjustment	0° - +25°
Power supply	12 - 24 VAC ±10% (50 /60 Hz) 12 - 30 VDC ±10%
Power consumption	<1.3W (<2VA at AC) at min. configuration <3.5W (<4.5V A at AC) at max. configuration
Test input	Opto coupler 10 - 30 VDC Current / 6mA max.
Safety / Test output 1	Form C relay
Safety / Test output 2	Voltage / 42 VDC Current / 0.3mA max.(resistance load)
Output hold time	Approx. 0.5 sec.
Response time	<75m sec.
Operating temperature	-20°C - +55°C (-4°F - +131°F)
Operating humidity	80%
IP rate	IP54
Dimensions	various x 44 x 51 mm (w x h x d)
Accessories	1 Operation manual, 4 mounting screws, 1 power supply cable 3m 1 communication cable, 1 door transferloop, 1 wiring cover

## Specifications OA-Edge T

Model	OA-Edge T
Profile colour	Silver / black
Mounting height	1.5 (4'11") to 3.0 m (9'10")
Detection method	Triangulation
Min. configuration	1 master module + 1 LED module
Max. configuration	4 sensor modules + 2 LED modules
Depth angle adjustment	0° - +25°
Power supply	12 - 24 VAC ±10% (50 /60 Hz) 12 - 30 VDC ±10%
Power consumption	<1.3W (<2VA at AC) at min. configuration <3.5W (<4.5V A at AC) at max. configuration
Test input	Opto coupler 10 - 30 VDC Current / 6mA max.
Safety / Test output 1	Form C relay
Safety / Test output 2	Voltage / 42 VDC Current / 0.3mA max.(resistance load)
Output hold time	Approx. 0.5 sec.
Response time	<75m sec.
Operating temperature	-20°C - +55°C (-4°F - +131°F)
Operating humidity	80%
IP rate	IP54
Noise level	<70dBA
Category	2 (EN ISO13849-1 : 2008)
Performance level	d (EN ISO13849-1 : 2008)
Dimensions	various x 44 x 51 mm (w x h x d)
Accessories	1 Operation manual, 4 mounting screws, 1 power supply cable 3m 1 communication cable, 1 door transferloop, 1 wiring cover

# OPTEX CO.,LTD.

5-8-12 Ogoto Otsu, 520-0101 Japan  
 TEL : +81(0)77-579-8700 FAX : +81 (0)77-579-7030  
 WEBSITE : www.optex.co.jp